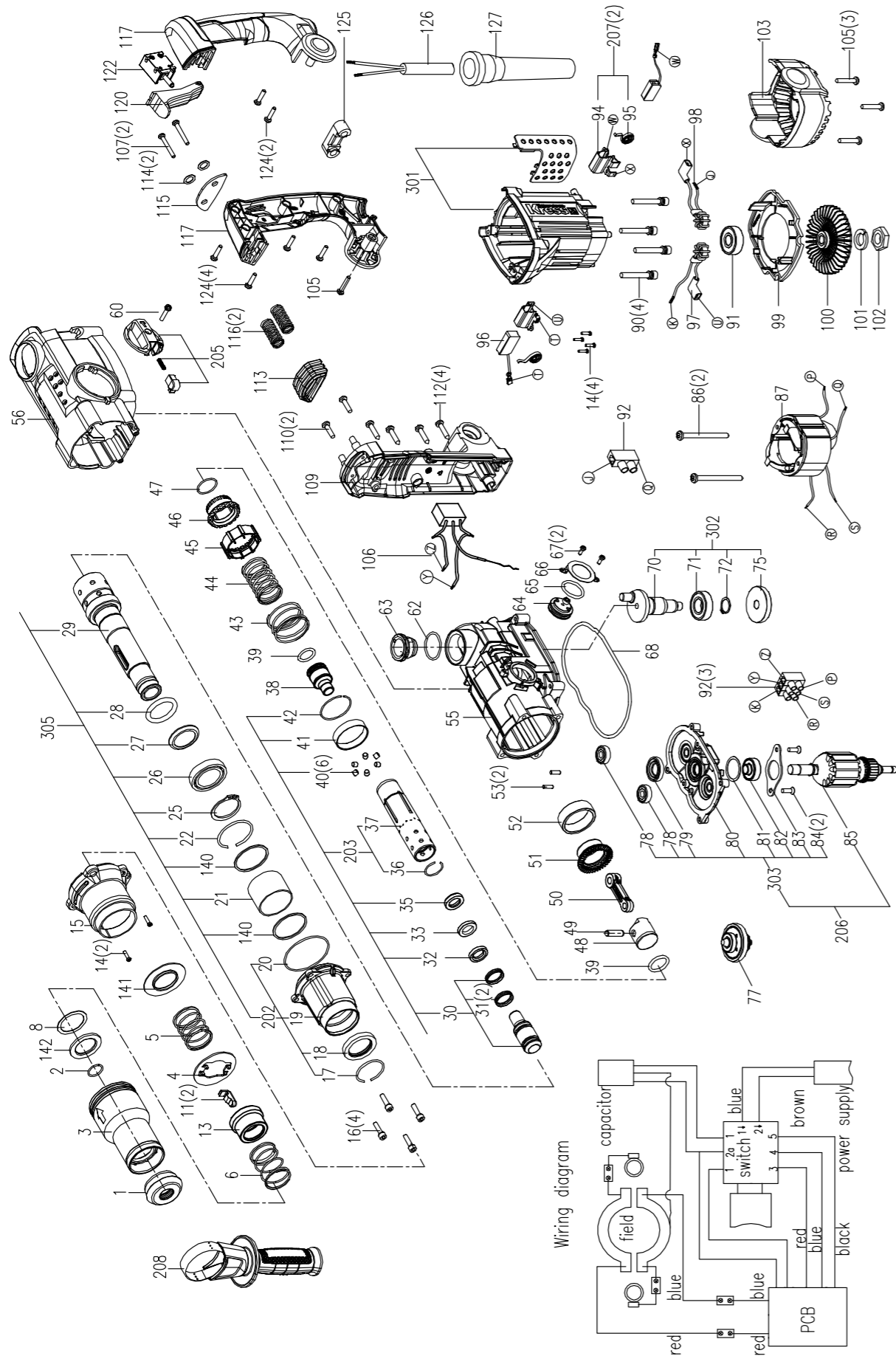


Kress 



KUX21



Posición	Referencia	Cantidad	Descripción
1	59001465	1	Dustproof Cover
2	59001502	1	Retaining Ring
3	59001466	1	Cubierta deslizante
4	59001483	1	Baffle Plate
5	59001452	1	Compression Spring
6	59001450	1	Compression Spring
8	59001489	1	Washer
11	59001473	2	Dispositivo de parada
13	59001467	1	Steel Sleeve
14	59001459	6	Self Tapping Screw
15	59001500	1	Fore Housing Body
16	59001550	4	Screw Washer Assembly
17	59001556	1	Retaining Ring I
18	59001609	1	Retaining Oil Seals
19	59001516	1	Housing Box
20	59001540	1	O Rings
21	59001510	1	Sleeve
22	59001474	1	Anillo de retención
25	59000624	1	Anillo de retención
26	59000577	1	Ball Bearing 61906
27	59001561	1	Steel Sleeve Iv
28	59001488	1	O Ring
29	59001583	1	Sleeve
30	59001582	1	Hammer Staff Set
31	59001606	2	O Ring
32	59001563	1	Holding Cover li
33	59001547	1	Rubber Spacer
35	59001564	1	Holding Cover I
36	59001448	1	Retaining Ring
37	59001585	1	Cilindro
38	59001589	1	RAM
39	59001480	2	O Rings
40	59001552	6	Pin □
41	59001617	1	Steel Sleeve I
42	59001496	1	Retaining Ring

Posición	Referencia	Cantidad	Descripción
43	59001566	1	Compression Spring
44	59001567	1	Compression Spring
45	59001490	1	Prevent Rotating Sleeve
46	59001588	1	Cubierta deslizante □
47	59001520	1	Junta tórica
48	59001512	1	Pistón
49	59001454	1	Pin □
50	59000570	1	Linkage
51	59001586	1	Conic Gear
52	59001503	1	Oil Seal Bearing
53	59001497	2	Column Pin
55	59001568	1	Gear Housing
56	59001615	1	Cuerpo de la carcasa trasera
60	59001074	1	Self tapping screw ST4.2*18
62	59001548	1	O Rings
63	59001618	1	Oil Cap Set
64	59001591	1	Knob Stand
65	59000518	1	O Ring
66	59001477	1	Placa de prensa □
67	59001534	2	Tornillo penetrante
68	59001462	1	Sealed Ring
70	59001595	1	Eje excéntrico
71	59001469	1	Ball Bearing
72	59001309	1	Retaining ring(17-A)
75	59001594	1	Engranaje □
77	59001593	1	Eje medio
78	59001457	2	Bearing
79	59001458	1	Retaining Oil Seals
80	59001493	1	Cubierta central
81	59000459	1	Washer
82	59001546	1	Bearing
83	59001507	1	Placa de prensa □
84	59001554	2	Self Tapping Screw
85	59001592	1	Rotor
86	59001455	2	Tornillo

Posición	Referencia	Cantidad	Descripción
87	59001596	1	Estator
90	59001539	4	Screw Washer Assembly
91	59000935	1	Bearing 608
92	59001076	4	Conector
94	59001472	2	Portaescobillas
95	59001524	2	Whorl Spring
96	59001597	1	Escobilla de carbón (par)
97	59001511	1	Choke
98	59001537	1	Choke
99	59001487	1	Wind Baffle
100	59001542	1	Fan
101	59001545	1	Arandela de resorte
102	59001551	1	Nut
103	59001491	1	Tapa de la carcasa
105	59000484	4	Tornillo penetrante
106	59001532	1	Actiyator
107	59001221	2	Self Tapping Screw ST4.2*35
109	59001475	1	Cubierta trasera
110	59001555	2	Tornillo
112	59001525	4	Tornillo penetrante
113	59001495	1	Funda de goma
114	59001544	2	Washer
115	59001485	1	Brida exterior
116	59001541	2	Resorte de compresión
117	59001614	1	Handle
120	59000563	1	Perilla de interruptor
122	59001482	1	Switch Body
124	59000560	6	Tornillo penetrante
125	59000557	1	Abrazadera de cable
126	59001624	1	Cable de alimentación
127	59001461	1	Protector de cable
140	59001481	2	Washer
141	59001519	1	Washer V
142	59001484	1	Washer Iv
202	59001610	1	Fore Housing Box

Posición	Referencia	Cantidad	Descripción
203	59001598	1	Ensamblaje del cilindro
205	59001600	1	Palanca de cambio de marchas
206	59001601	1	Conjunto de rotor
207	59001602	2	Conjunto de portaescobillas
208	59001559	1	Side Handle Assembly
301	59001560	1	Housing set
302	59001603	1	Eccentric Shaft Set
303	59001604	1	Cubierta de la caja de engranajes
305	59001611	1	Output Shaft Set
	59001584	1	O Rings